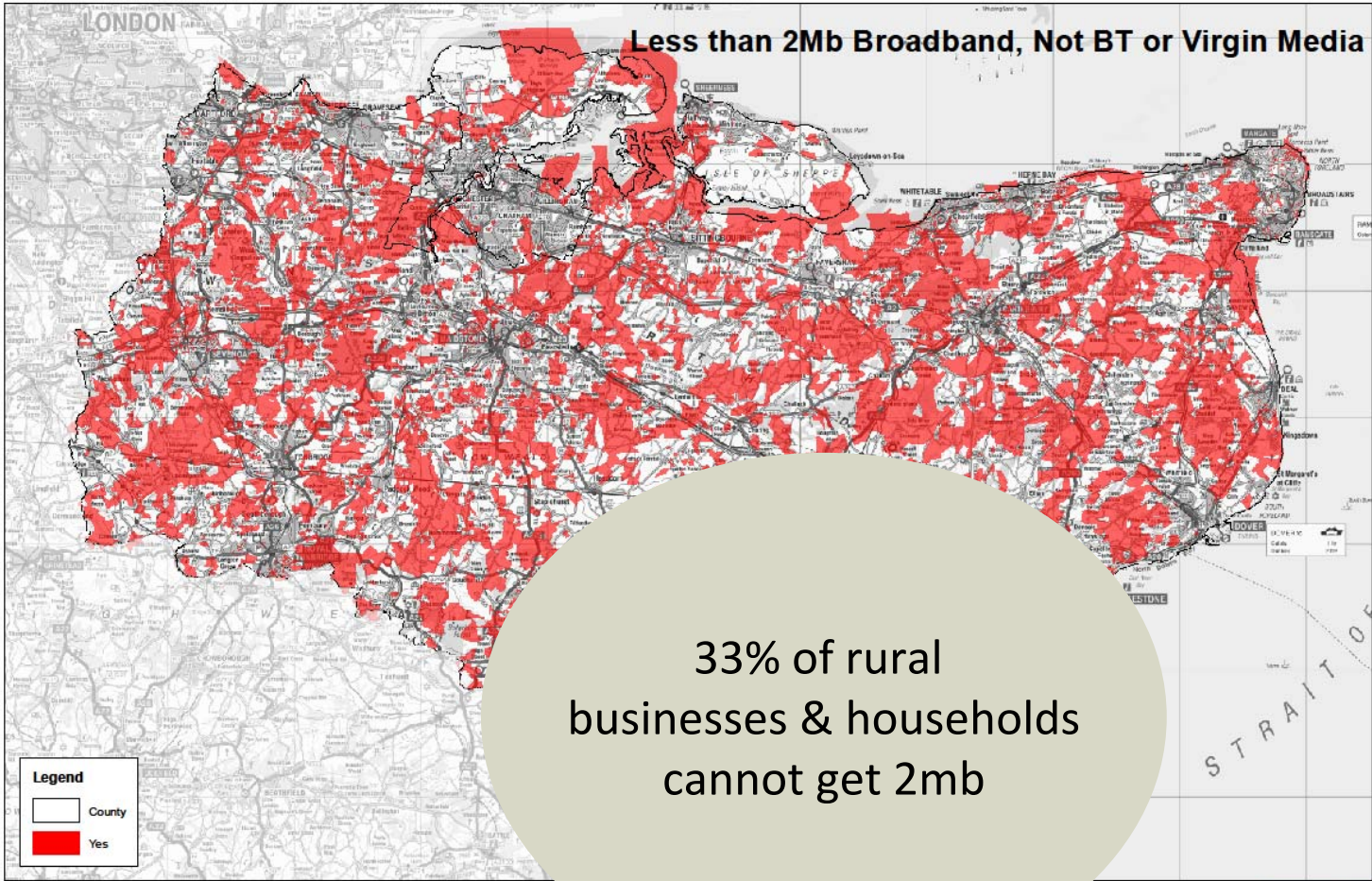


# Broadband in Kent



# Digital Britain Standard



Produced by The KCC GIS Team

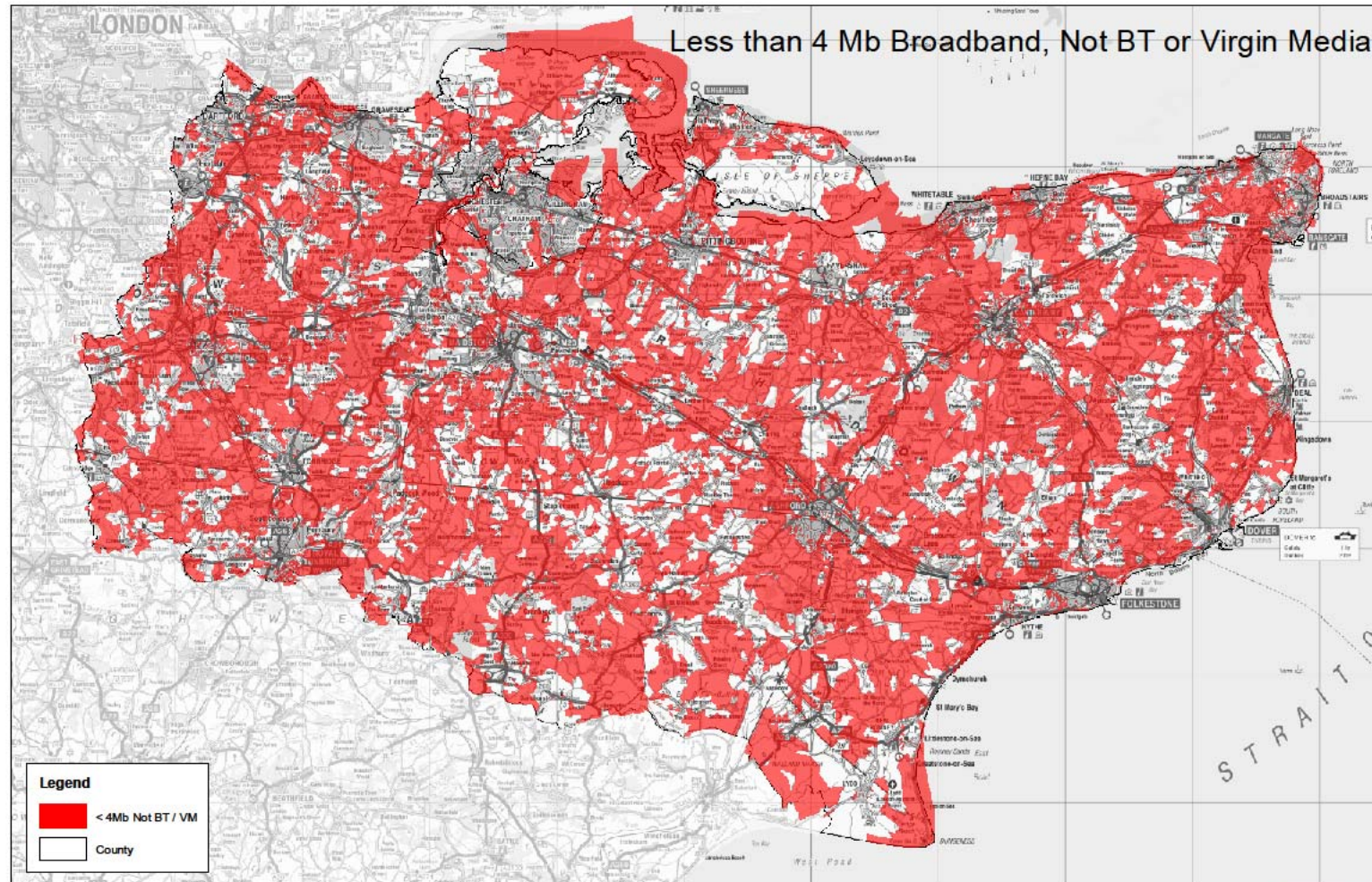
This map is based upon Ordnance Survey material with the permission of Ordnance Survey on behalf of the Controller of Her Majesty's Stationery Office. Unauthorised reproduction infringes Crown Copyright and may lead to prosecution or civil proceedings. 100019238. 2009

Ref: ma1674\_7

20 Kilometers



# Less than 4 mb



Produced by The KCC GIS Team

This map is based upon Ordnance Survey material with the permission of Ordnance Survey on behalf of the Controller of Her Majesty's Stationery Office (C) Crown Copyright. Unauthorised reproduction infringes Crown Copyright and may lead to prosecution or civil proceedings. 100019238. 2009

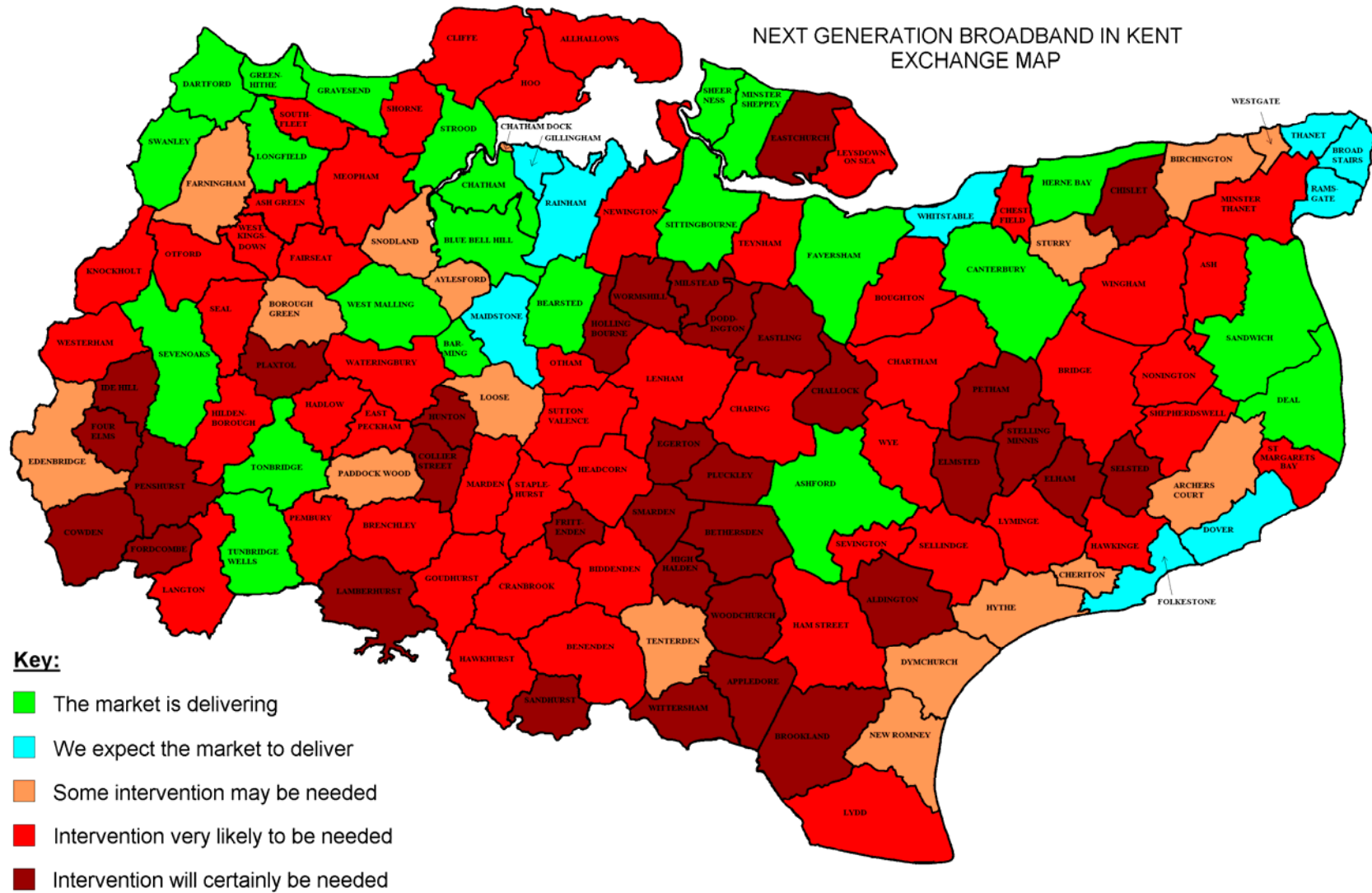
Ref: ma1674\_13

# Broadband Leadership Survey October 2010

Rank	Country
1	S. Korea
2	Hong Kong
3	Japan
4	Iceland
5=	Luxembourg
5=	Singapore
5=	Switzerland
8	Malta
9	Netherlands
10=	Qatar
10=	United Arab Emirates
12	Sweden
13	Denmark
14	Norway
15	Bahrain
16=	Finland
16=	Ireland
18	Israel
19=	Canada
19=	France

Rank	Country
19=	Latvia
19=	Slovenia
19=	United States
24	Belgium
25=	Estonia
25=	Germany
25=	United Kingdom
28	Cyprus
29	Taiwan
30=	Australia
30=	Spain
32=	Lithuania
32=	Portugal
34	Romania
35	Czech Republic
36=	Greece
36=	New Zealand
38	Austria
39	Italy
40	Bulgaria

# Next Generation Access – the size of the challenge



## The size of the challenge

---

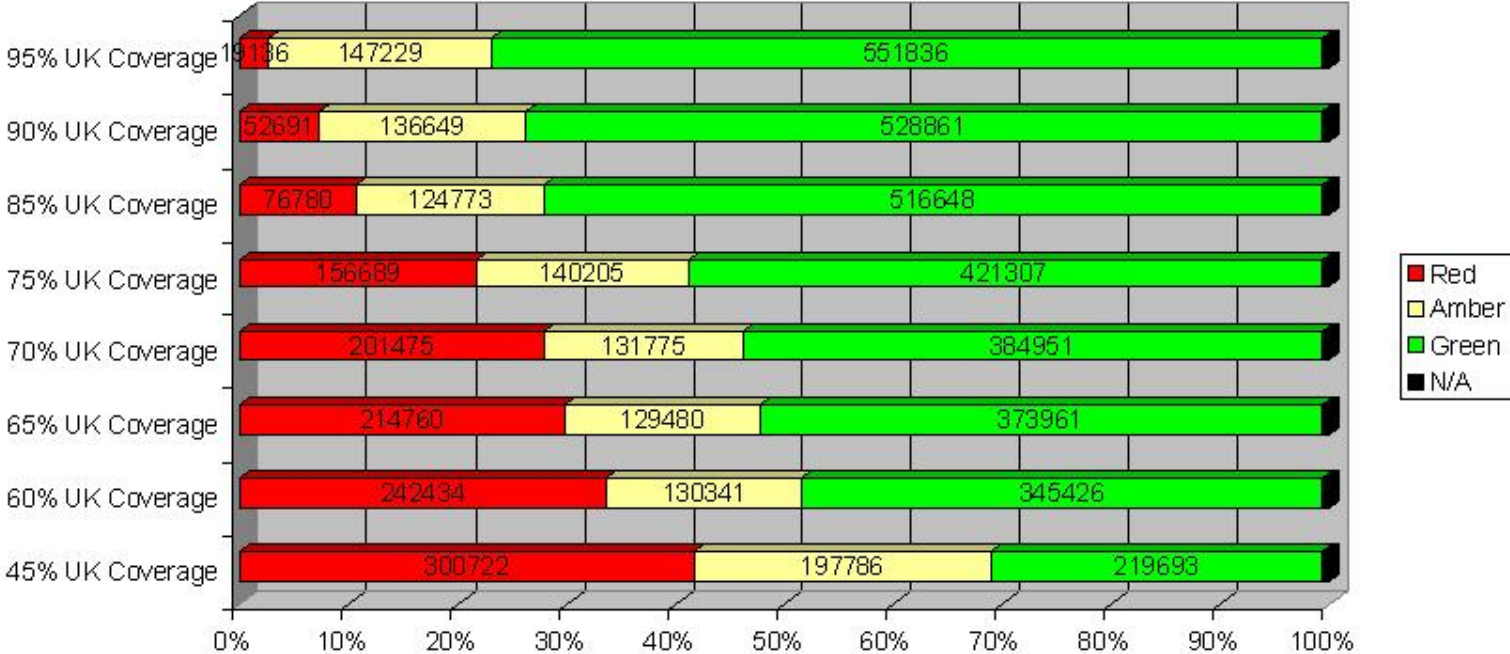
“The shortfall in investment to deliver fibre (effectively unlimited bandwidth) to all properties in Kent (where the market will either not respond or respond too slowly) is in the order of **£500 million -£1.1 billion.**”

“Over 40% of Kent’s businesses are in areas of market failure for Next Generation Access”

# Anticipated Next Generation Access Provision: The size of the challenge

## Risk of Missing Out on NGA at Various Market Coverages (Total Kent Households)

Figure 7:



The red and amber areas in figure 7 above illustrate those households which are at risk of missing out on NGA.

## Work to date

---

1. 2004 – KCC campaign to enable all exchanges
2. Community Broadband and Rural Superfast Grant Schemes

Reduced number of properties without broadband to 37,958 to 14,669

Iwade and Selling identified as exemplars

3. Developing the evidence base
4. Broadband Campaign work
5. BDUK bid for Kent and Medway
  - £530 million for investment in broadband infrastructure
  - Kent and Medway bid for c£21 million
  - Need to demonstrate strong business support/need
  - 18<sup>th</sup> April 2011 submission deadline

## We need your support

---

Please send us a short email to [broadband@kent.gov.uk](mailto:broadband@kent.gov.uk) outlining:

- the nature/quality of your current broadband connection
- the impact of that this is having on your business (currently and in future)
- a statement of your support for the Broadband Delivery UK bid